

DIAMOND

Freccia luminosa trasparente.
Transparent illuminated arrow.

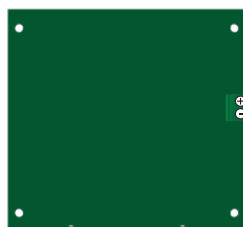
FUNZIONI PRINCIPALI

- Struttura: frecce luminose in polimetilmetacrilato (PMMA) trasparente 65x65mm.
- Cablaggio: a morsetti.
- Illuminazione: backlight Bianca.
- Colori: bianco (standard) con possibilità di personalizzare.
- Alimentazione: 12-24 V DC.
- Opzionale: gong bitonale tramite scheda seriale ITF852-ARW.

MAIN FEATURES

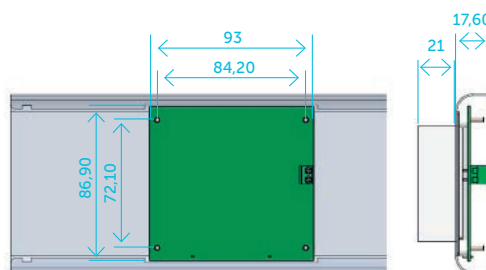
- Body: transparent PMMA illuminated arrows, 65x65mm.
- Wiring: pin terminals.
- Illumination: white backlight.
- Colours: white as standard model, other colours can be made.
- Power supply: 12-24 V DC.
- Optional: bi-tonal gong thanks to the ITF852-ARW serial boards.

PINOUT



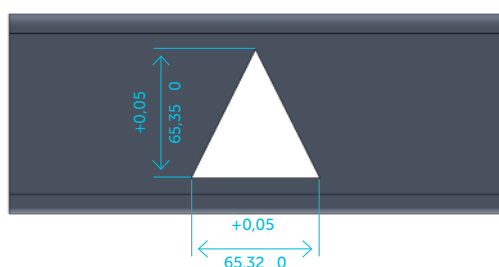
Alimentazione /
Power Supply
12/24 V DC

DIMENSIONI / DIMENSIONS

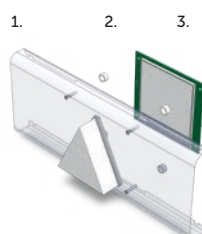


Tutte le
dimensioni
sono in
mm / All
dimensions
are in mm

SCASSO / CUT OUT



MONTAGGIO / MOUNTING



- 1 | Freccia / Arrow
- 2 | Piastra / Faceplate module
- 3 | Supporto di fissaggio / Fixing support